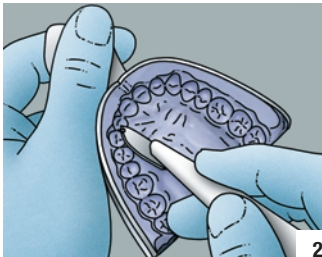
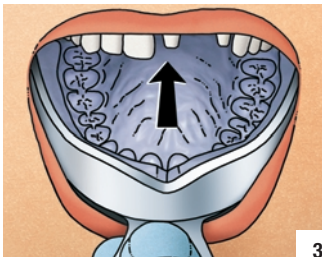


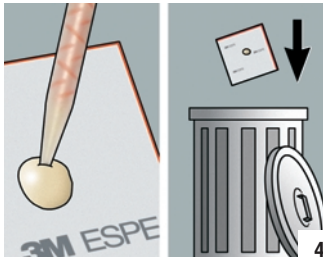
- Remove excess material as needed.



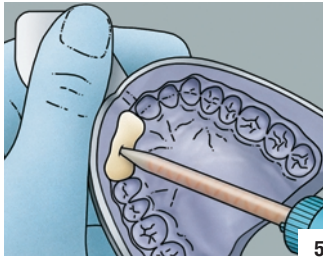
- Remove interproximal septa.



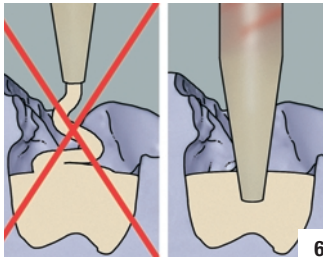
- Reposition matrix in the mouth to confirm proper fit.



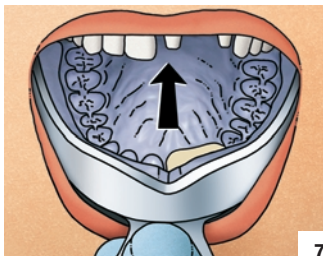
- Bleed a small amount of material through the mix tip before dispensing in the matrix.
- Discard extruded material.



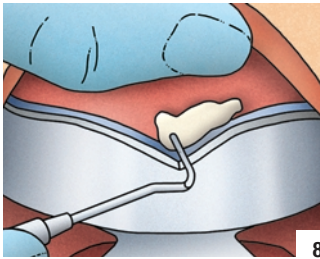
- Dispense material into the impression or matrix.



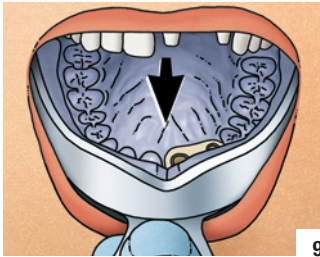
- Make sure to fill from the bottom up and to always keep the tip immersed in the temporary material to prevent voids.
- (Working time: 40 seconds)



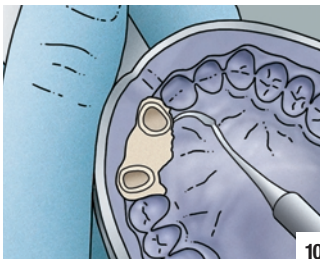
- Seat in the mouth and hold firmly in place.



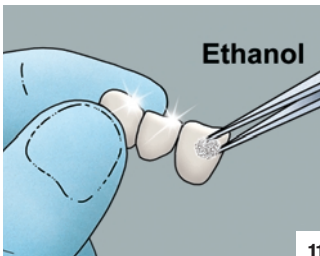
- Check setting progress with excess material.



- Remove from mouth between 1:40 and 2:50 min:sec from the onset of mixing.

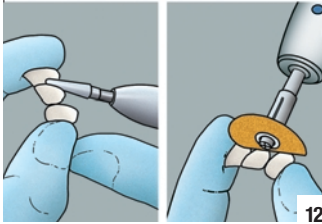


- Leave material in the matrix for 5:00 min:sec.
- This is important to achieve a smooth and shiny surface.



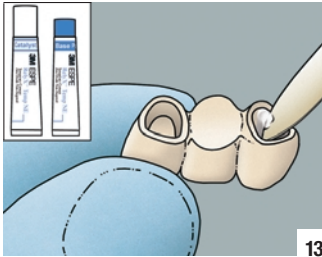
- Remove oxygen inhibited layer with ethanol.

optional



12

- Finish and polish as needed.



13

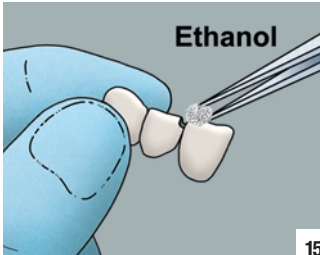
- Cement provisional restoration using a temporary cement.



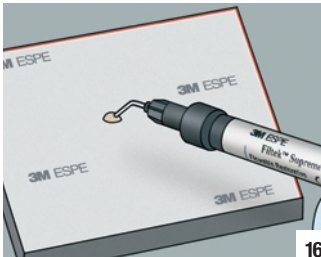
14

- Remove the excess.

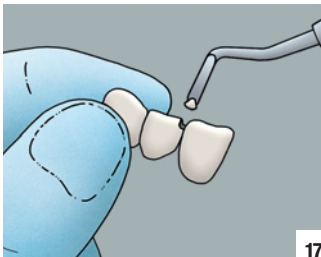
Individualization and Shape Correction



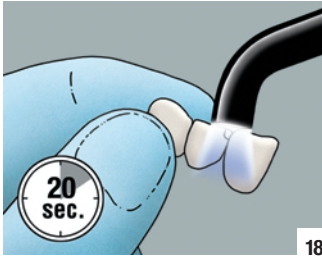
- Remove any contamination with ethanol.



- Dispense Filtek™ Supreme Plus flowable composite onto a mixing pad.

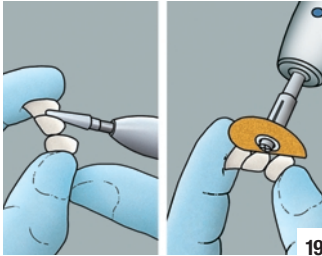


- Apply the composite to the temporary restoration.



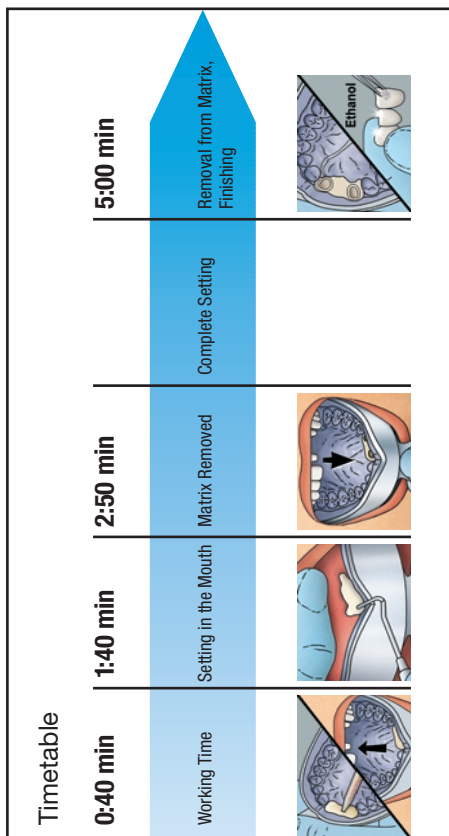
18

- Cure each layer separately with light for 20 sec each.



19

- Trim the composite with carbide burs and polish as needed.



3M ESPE



3M ESPE AG
 Dental Products
 D-82229 Seefeld – Germany

3M ESPE
 Dental Products
 St. Paul, MN U.S.A 55144-1000