

Clinpro™ Sealant

Professional Protection



Comfortable

Caries Protection

Easy to use, easy to verify

Clinpro™ Sealant

Comfortable Caries Protection

Easy to use – easy to verify.

3M™ ESPE™ Clinpro™ Sealant is a light-cure, fluoride-releasing sealant for enamel pits and fissures. It represents effective protection for the early prevention of caries.

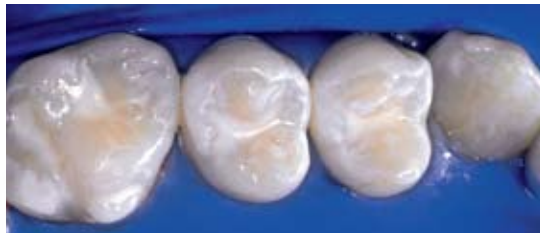
Clinpro sealant can be applied directly to the tooth, simply and neatly, with a hand syringe. A unique feature that makes your work easier is our innovative colour-change technology: when Clinpro sealant is first applied to the tooth surface, it is pink, but it changes to an opaque tooth shade when exposed to light. The clearly visible pink colour helps you to measure out the material and apply it evenly during the sealing process.

See the difference in our Colour-Change Technology:

Clinpro sealant goes on pink for easy-to-use application and cures to a natural white. Applied with our convenient ultra-fine syringe tip, its low viscosity formula flows easily into pits and fissures.



Before



After

For perfect results, remember:

- The teeth must be sufficiently erupted so that a dry zone can be created and maintained.
- The pits and fissures should be damp.
- The change in colour is not an indicator of completed curing. The recommended duration of light curing (20 seconds) must be respected.

How to protect teeth from caries:

1. Select the tooth to be treated (it must be sufficiently erupted).
2. Clean the enamel (mechanical or with an air polish), remove plaque and debris, and rinse with water. Do not use a cleaning medium containing oil or sodium bicarbonate.
3. Isolate and dry the tooth, ideally with a rubber dam. Cotton rolls with isolation shields are also appropriate.
4. Etch the enamel for a minimum of 15 seconds and a maximum of 60 seconds.
5. Rinse the enamel thoroughly with water.
6. Air-dry the enamel thoroughly: the dry, etched surfaces should be matt white.
7. With the syringe needle, slowly inject Clinpro sealant into the pits and fissures.
8. Cure Clinpro sealant by exposing it to light for 20 seconds. The lamp should be placed as close to the sealant as possible without actually touching it.
9. When Clinpro sealant is set, it forms a hard opaque film in a light yellowish tooth shade.
10. Evaluate the results: the sealant film should cover the tooth completely without any gaps.
11. Wipe off any sticky residue with cotton wool. Check the occlusion and adjust if necessary.

Application is even easier with Adper™ Prompt™ L-Pop™ Self-Etch Adhesive

“No rinse sealant technique”



Brush adhesive onto surface to be sealed; scrub for 15 seconds applying moderate pressure. Do not shorten this time. Proper bonding will not occur if the solution is simply applied and dispersed.



Use a gentle stream of air to thoroughly dry the adhesive to a thick film. A second layer is not required for bonding sealants.



Applying a light-cured sealant. (Note: Adper Prompt self-etch adhesive is not indicated for self-cure sealants.)



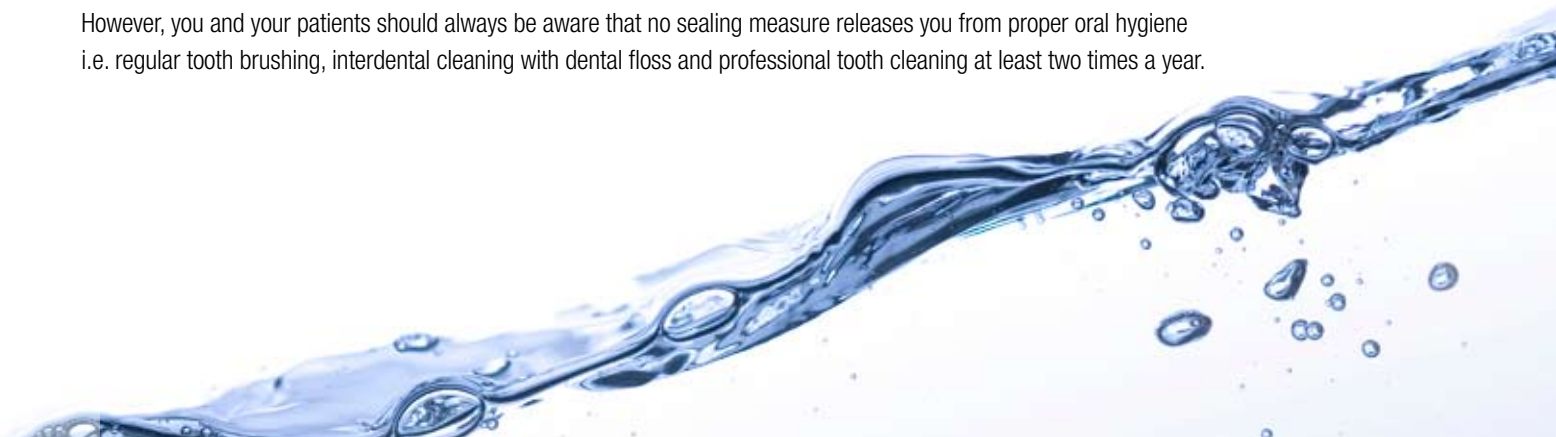
Light-cure the sealant and adhesive together with a halogen, LED or plasma light for the amount of time specified to cure the sealant.

Important hints for the successful use of sealant.

Before you apply a sealant, please note that some conditions have to be fulfilled: as the most important point, the fissure has to be completely free of caries. Another prerequisite is that the individual risk of caries (ascertainable with the 3M™ ESPE™ Clinpro™ Cario L-Pop™ Test) and the shape of fissures actually necessitate sealing. In any case, the whole procedure has to be carried out strictly according to the rules (cave: non-cooperative children), including proper handling of material.

Studies confirm that sealing is substantially more effective than fluoridation, It is also confirmed that young persons with fissure sealing show a DMF-T rate 50% lower than those without fissure sealing. The DFM-T index (diseased, missing and filled teeth) measures the seriousness and consequences of a carious disease.

However, you and your patients should always be aware that no sealing measure releases you from proper oral hygiene i.e. regular tooth brushing, interdental cleaning with dental floss and professional tooth cleaning at least two times a year.



Ordering Information: Clinpro™ Sealant



Clinpro™ Sealant Intro-Kit

Item No.	Product Information
12636	3M™ ESPE™ Clinpro™ Sealant Intro-Kit 2 Clinpro sealant syringes 1.2 ml; 3M™ ESPE™ Scotchbond™ Etchant Syringe 3 ml; 20 Clinpro sealant syringe Tip (black); 20 Clinpro Sealant Syringe Tips (blue)
12637	3M™ ESPE™ Clinpro™ Sealant Refill 2 Clinpro sealant syringes 1.2 ml; 10 Clinpro sealant syringe tips (black)
Also available as 3M™ ESPE™ Clinpro™ Sealant Intro-Kit Bottle with Refills and Tips	
12631	3M™ ESPE™ Clinpro™ Sealant Intro-Kit Bottle 2 Clinpro sealant bottle 6 ml; 3M™ ESPE™ Scotchbond™ Etchant Syringe 9 ml; 2 Brush Handles; 60 Brush Tips; 50 Fiber Tips; 1 Mixing Well with Cover
12632	3M™ ESPE™ Clinpro™ Sealant Refill 1 Clinpro sealant bottle 6 ml
12626	3M™ ESPE™ Clinpro™ Sealant Refill Tips 10 Clinpro sealant dispensing tips
41923	3M™ ESPE™ Adper™ Prompt™ L-Pop™ Self-Etch Adhesive Mini Pack 20 L-Pop applicators with XS brushes ³
41925	3M™ ESPE™ Adper™ Prompt™ L-Pop™ Self-Etch Adhesive Refill Pack 40 L-Pop applicators ³
41926	3M™ ESPE™ Adper™ Prompt™ L-Pop™ Self-Etch Adhesive Giant Pack 100 L-Pop applicators ³
41927	3M™ ESPE™ Adper™ Prompt™ L-Pop™ Self-Etch Adhesive Bulk Pack 200 L-Pop applicators ³
41928	3M™ ESPE™ Adper™ Prompt™ L-Pop™ Self-Etch Adhesive Economy Pack 500 L-Pop applicators ³



Adper™ Prompt™ L-Pop™ Bulk Pack



3M ESPE

3M ESPE Dental Products
3M House
Morley Street
Loughborough
Leicestershire
LE11 1EP
Tel: 0845 602 5094
Email: 3mespe@mmm.com
Website: www.3mespe.co.uk

3M Ireland
3M House
Adelphi Centre
Upper George's Street
Dun Laoghaire
Co. Dublin. IRELAND

3M, ESPE, Adper, Clinpro, L-Pop and Scotchbond are trademarks of 3M or ESPE AG.
© 3M 2008. All rights reserved.
GD256 (07.2008)