

# Preventive Care from 3M ESPE

Clinpro™ XT Varnish is easy to use and does not require the use of a rubber dam. To learn more about using Clinpro XT Varnish for protecting enamel surfaces and for patients with orthodontic brackets, visit [www.3MESPE.com.au/preventive](http://www.3MESPE.com.au/preventive) or contact 3M ESPE Customer Care at 1300 363 454.

## Clinpro™ XT Varnish Exposed Root Surface Sensitivity Application



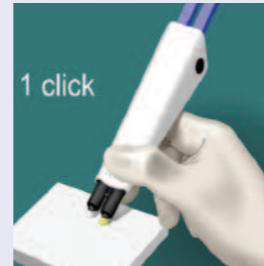
1. Clean the tooth surface



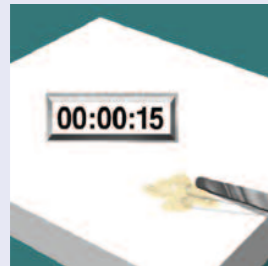
2. Rinse with water



3. Remove excess, pooled water



4. Dispense onto mixing pad



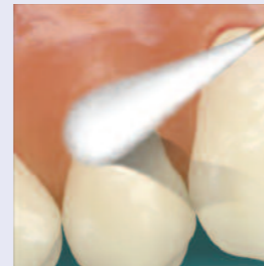
5. Mix for 15 seconds (2.5 min. working time)



6. Apply thin layer to tooth surface



7. Light cure for 20 seconds



8. Wipe the coating with a moist cotton applicator

## Clinpro™ XT Varnish

Durable Fluoride-Releasing Coating



Item #	Product Information
12248	Clinpro™ XT Varnish 1 - 10g Clicker™ Dispenser

**3M ESPE**

3M ESPE Dental Products  
3M Australia ABN 90 000 100 096  
950 Pacific Highway  
Pymble, NSW 2073  
Hotline 1300 363 454  
[www.3MESPE.com.au/preventive](http://www.3MESPE.com.au/preventive)

3M, ESPE, Clicker and Clinpro are trademarks of 3M or 3M ESPE AG. Duraphat, Seal & Protect, Gluma are not trademarks of 3M.

# Clinpro™ XT Varnish

Durable Fluoride-Releasing Coating

**NEW  
PRODUCT**



Slow Fluoride Release

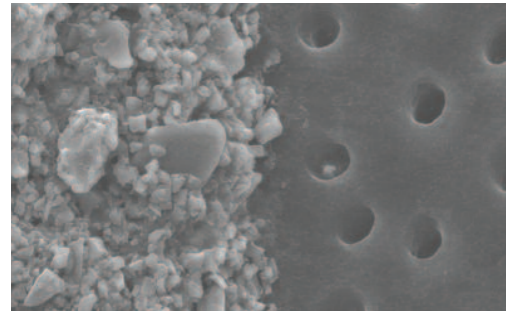


**3M ESPE**

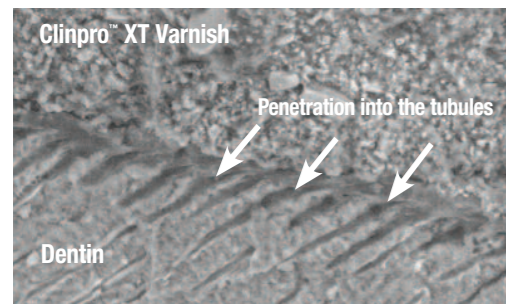


# Introducing the protective barrier that immediately relieves sensitivity, delivers fluoride and lasts 6 months

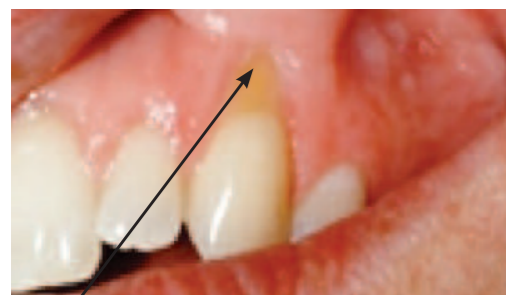
## Clinpro™ XT Varnish seals and protects dentin tubules



SEM image of exposed dentin tubules (right) and Clinpro™ XT Varnish (left) at 3000x magnification illustrates the barrier effect



Cross-sectional SEM image of Clinpro™ XT Varnish coated on dentin at 1000x magnification illustrates the resin tags penetrating the tubules



Clinpro™ XT Varnish is virtually invisible when applied to the tooth surface

Clinpro™ XT Varnish is a site-specific, light-cured, durable, fluoride-releasing coating that provides an immediate layer of protection to relieve dentinal hypersensitivity.

- Great for protecting exposed, sensitive root surfaces, especially newly cleaned surfaces following scaling & root planing
- Remains on the tooth for six months or longer
- Moisture tolerant: no need to dry or pre-treat the root surface
- Does not require the use of a rubber dam
- Delivers fluoride, calcium and phosphate

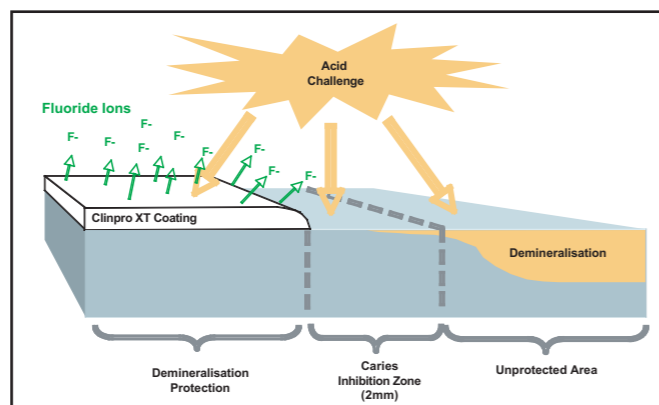
## Clinpro XT Varnish reduces dentin permeability by 88%<sup>1</sup>

Occluding dentinal tubules in-office provides immediate relief from pain associated with the movement of fluid through open tubules. In addition to creating a protective layer on exposed dentin, Clinpro XT Varnish has been shown to both penetrate and seal tubules. Laboratory testing demonstrates that Clinpro XT Varnish reduces dentin permeability by 88%.

## Clinpro XT Varnish protects the tooth surface from acid attack

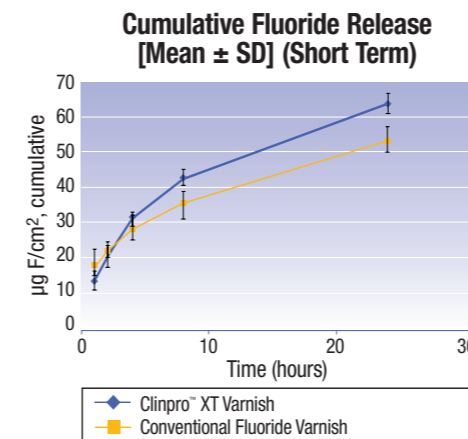
In vitro tests conducted with Clinpro XT Varnish demonstrate that the coating:

- Creates a barrier against demineralisation and acid erosion<sup>2</sup>
- Provides protection beyond the coating<sup>2</sup>
- Helps repair demineralised enamel adjacent to the coating<sup>3</sup>

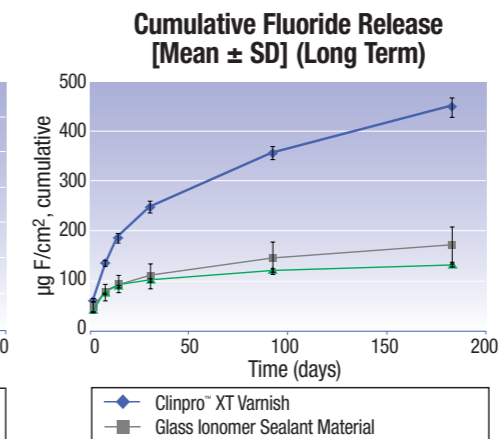


# Long-Term Protection

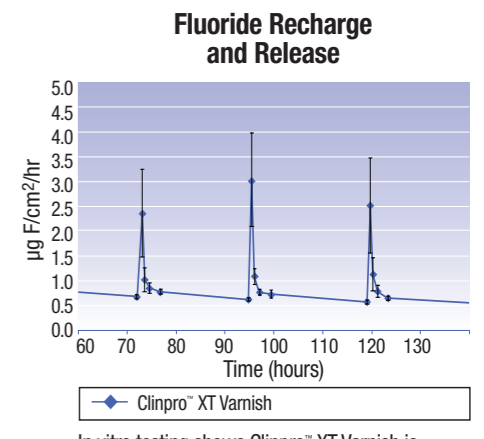
# Immediate Relief



In vitro testing shows Clinpro™ XT Varnish releases more fluoride over 24 hours than a conventional varnish.



In vitro testing shows Clinpro™ XT Varnish releases more fluoride over 6 months than other coatings.



In vitro testing shows Clinpro™ XT Varnish is recharged by brushing with fluoride toothpaste.

Source: 3M ESPE internal data

## Clinpro XT Varnish contains fluoride and is “recharged” by fluoride toothpaste

Clinpro XT Varnish is a resin-modified glass ionomer material that releases fluoride, calcium and phosphate. This makes it unique versus other in-office desensitisers. In the first 24 hours, Clinpro XT Varnish releases more fluoride than a conventional fluoride varnish. Plus, Clinpro XT Varnish is recharged every time the patient brushes with fluoride toothpaste. Your patients not only get the protection of a physical barrier, they get the benefit of long-term fluoride delivery.

## The Complete Solution – Check out the differences

Existing dentinal hypersensitivity relief products offer multiple benefits, but no other product offers all the advantages of Clinpro XT Varnish.

	Immediate Sensitivity Relief	Long-Term Coating	Moisture Tolerant	Fluoride Release	Calcium Release
Clinpro™ XT Varnish	✓	✓	✓	✓	✓
Glutaraldehyde-based Desensitisers (e.g. Gluma™)	✓	✓			
Resin-based Desensitisers (e.g. Seal & Protect™)	✓	✓			
Conventional Fluoride Varnishes (e.g. Duraphat™)	✓		✓	✓	



1. Rusin et al., Dentin Permeability of a New Protective Coating Material. J. Dent. Res. 87 (Spec Iss A): #1041, 2008.  
 2. Rusin et al., Demineralization Protection of a New Protective Coating. J. Dent. Res. 87 (Spec Iss B): #627, 2008.  
 3. 3M ESPE internal data